



Gender-based violence impacts individuals of all genders throughout their lives. Students identifying as female, transgender, and non-binary are more likely to experience sexual harassment and abuse, including in university settings.

The Building Safer Communities campaign promotes awareness about gender-based violence, fosters a culture of respect and safety, and provides advice on how to recognise, respond and refer when help is needed.

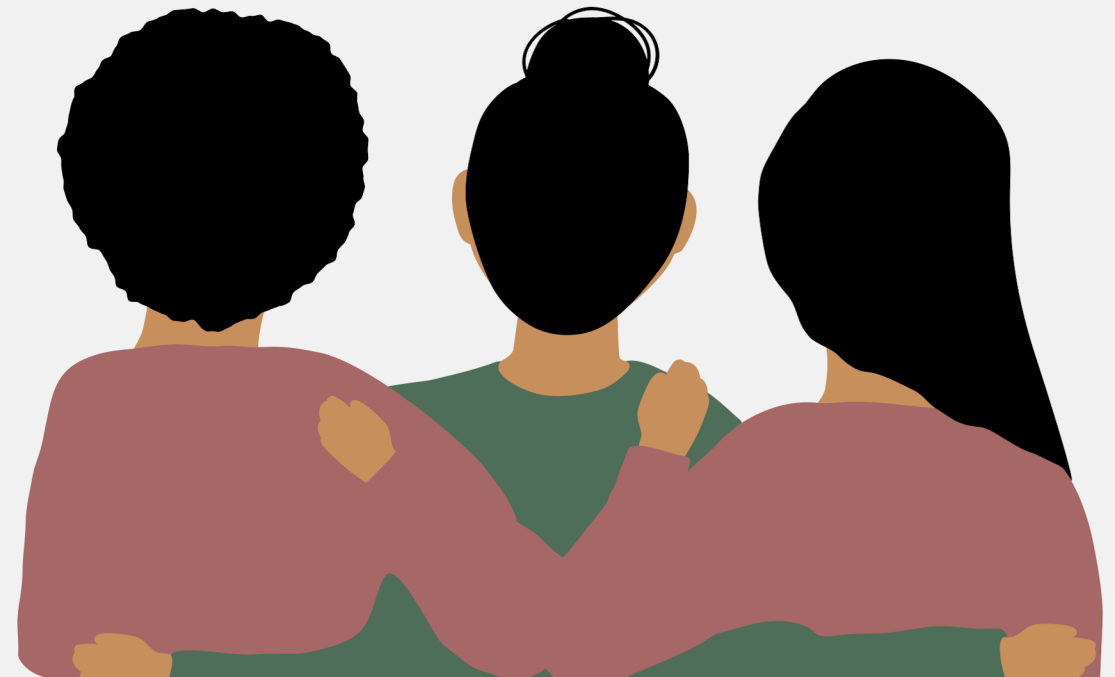


Support & Referral



# recognise, respond & refer.

BUILDING SAFER COMMUNITIES



# recognise

We all face challenges, and sometimes we just need someone to understand what's going on. You may notice a friend or yourself:

- Avoiding socialising or withdrawing
- Avoiding discussing personal topics
- Showing signs of anxiety, depression, or suicidal ideation
- Feeling fatigue or insomnia
- Fearing not being believed
- Feeling helpless



By taking a moment to listen and make someone feel heard, we can let them know we're here for them and that there's help available. How we respond might look like:

- Expressing compassion
- Listening without judgement
- Encouraging self-expression
- Providing support choices
- Respecting and honoring their decisions

# respond

# refer

Emergency Assistance  
Police/Fire/Ambulance  
**000**

Western Sydney University  
Campus Safety & Security  
**1300 737 003**

NSW Rape Crisis (24/7 support)  
**1800 424 017**

1800 RESPECT (24/7 support)  
**1800 737 732**

University Support Services  
Mon-Fri 9.00am - 5.00pm  
**1300 668 370**

University Complaints Resolution  
**(02) 9678 7900**

Submit a report - this can be  
anonymous

