

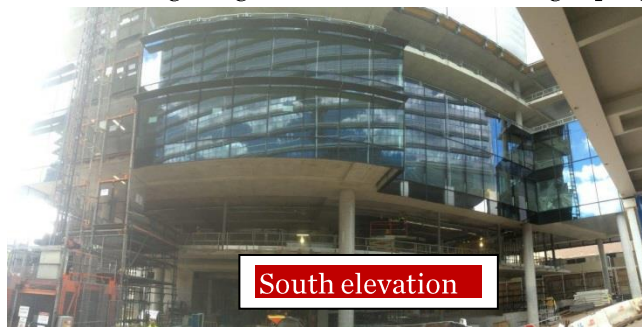
An Overview of Parramatta City Campus

The new vertical Parramatta City Campus at One Parramatta Square (1PSQ) is our most forward thinking, technology enabled facility. It represents a step forward in providing students and staff with diverse spaces to promote collaboration and student-centred learning in the Parramatta CBD.

The School of Business, including the Sydney Graduate School of Management, will be the lead tenant of the new campus from the beginning of 2017.

This document provides an overview of the building design, proposed fit-out and supporting technology to illustrate the range of facilities this campus will offer.

The following images show how the building is progressing¹.



¹ Photos as at end March 2016

Ground floor

The ground floor is an open public space containing retail outlets, exhibition spaces, and video walls, allowing the University to promote our work and showcase students work to the broader community and industry. It will also include a building concierge and will be supported by a 24/7 security team.

Level 1 - Student Services Hub

This level will provide a one stop student support service, including a student services arrival lounge, Student Central, IT and Library support, and printing hubs. A range of quiet and discreet student support zones for counselling, academic, and private discussions will be supplemented by a number of lounge and short term study spaces. Level 1 will use customer flow management technology to minimise queueing and where possible, allow pre-booking of specific support interactions.

Level 1 will also provide access to special purpose facilities including:

- First aid room
- Mother's room
- Parent's room
- Multi-faith room
- Muslim prayer rooms – separate rooms for males and females
- Queer space
- Clubs and societies – student only bookable rooms
- Access room
- Badanami room

Levels 2 to 7 – Teaching Floors

These levels will contain a range of formal and informal learning and teaching spaces. Generally, levels 2, 4, and 6 provide collaborative spaces, whilst levels 3, 5, and 7 are aimed at quieter and more focused work. Design, fit-out and furniture choices will match the intended purpose.

Learning studios

All teaching floors will have learning studios designed to focus on student-centred learning activities in Wi-Fi enabled environments. Studios will allow students to share, engage, apply, integrate, and develop their knowledge interactively and socially with peers and teaching staff. Each studio will accommodate 50 or 60 students in learning pods of five to six students per group table, supported by a computer on wheels and screen for each pod. Tables will have access to power to support bringing your own device (BYOD). Teaching staff will engage with students from different points around the room. The studios have large screens at either end, as well as a screen at each pod to allow students to receive and share content at their table. Most wall spaces are 'writable' (whiteboard material). Cameras will allow users to focus on material on the whiteboards and project this information to the screens.

Learning studios will have state of the art microphones and acoustic treatment to ensure staff and students can be easily heard. This allows the rooms to use Zoom technology to bring in guest lecturers or to join other rooms or groups of students.

Informal learning

Informal learning spaces throughout the building are either academic learning spaces (quiet, individual or small group discussion spaces with access to supporting technology) or social learning spaces (informal, fun, relaxation, eating and drinking spaces).

The following spaces will be available:

- **Open group study spaces** – open plan with mobile tables, chairs and lounge spaces for 4-6. Intended for short to medium term stays.
- **Enclosed group study spaces** – enclosed bookable rooms for 4-6 with tables, chairs, access to power, writable surfaces, and Zoom facilities. Intended for short to medium term stays.
- **Semi-enclosed group study spaces** – located centrally, with bench style seating for around 8-10, bookable, supported by technology and writable surfaces.
- **Group study booths** – enclosed bookable rooms on level 5 with bench style seating for 4-6, power, a screen, writable surfaces, and mobile furniture. Intended for short to medium term stays.
- **Open group booths** – partly open rooms located on levels 3 and 7 with bench style seating for 6-8 provide power, a screen, writable surfaces, and mobile furniture. Intended for short to medium term stays.
- **Verandah lounges** – located on all teaching floors (i.e. levels 2-7), a combination of single armchairs and two seater lounges, ideal for reading and other quiet work. Provide access to power and screened from thoroughfares. Intended for medium to long term stays.
- **Laptop bars and BYOD benches** – located throughout all levels. Easy to access bar and stool arrangements, standard and USB power. Intended for use with students' own devices. Ideal for independent or side-by-side study activities.
- **PC benches** – provided throughout teaching floors, these are continuous benches and chairs with University provided computers. Some will be height adjustable single use desks. Intended for short to medium term stays.
- **Individual study booths** – located on levels 2, 4 and 6, these are desk spaces for focused individual work with power and high levels of privacy. Some will have University provided computers, with others designed for BYOD. Some will be height adjustable.
- **Quiet study rooms** – enclosed rooms on all floors for one to two people, with tables for laptops, books and resources, and single arm chairs with tables for laptops, power to support BYOD, and access to writable surfaces. Intended for medium to long term stays.
- **Open quiet study rooms** – located on levels 3 and 7, seating one to two people with high level privacy screening, desks, and power for BYOD. Intended for short to medium term stays.
- **Open collaborative lounges** – located on all floors, transient, with no distinct boundaries. Provide power, movable and flexible furniture and lounging modules. Intended for short to medium term stays.
- **Arrival lounge** – located near the lifts on all floors, designed for spontaneous social interactions. Function as meeting points or waiting areas. Consist of fixed modular lounges, movable flexible furniture, tables and stools, and access to power. Intended for high turnover occupancy.
- **Corridor lounge and waiting seating** – near atrium and escalators/stairs. Provide power, flexible furniture, stools, and side tables. Intended for high turnover.

- **Tea point seating** – For spontaneous social interaction, serve as meeting points and chill out areas where refreshments are available. Provide kitchen facilities, microwave, power, flexible furniture, stools, and side tables. Intended for high turnover.
- **Corner spaces outside learning studios** – provide a mixture of print stations, bench style seating, kitchenettes and student lockers.

Levels 8 and 10 – Staff Spaces

Levels 8 and 10 are staff spaces for the School of Business.

Level 9 – Event Space

To allow the new campus to connect the University, industry, and the broader community, level 9 has been set aside as event space, providing room for larger audiences, fundraising events, conferences and business dining, as well as University events.

Level 9 offers two flexible multi-functional spaces that can be divided into separate spaces by a moveable wall. Each space will accommodate approximately 140 people and includes flexible furniture to allow for large stand up gatherings. It will also have kitchen facilities and access to the terrace.

Level 10 – Research Space

Part of level 10 will be a dedicated research zone for School of Business doctoral students, including quieter spaces for focused research and writing. It will be equipped with informal study spaces similar to other levels, study pods equipped with screens, and a small number of Zoom rooms.

Technology

The new campus will be provided with a range of technology including:

- Upgraded Wi-Fi offering faster and more reliable performance
- Saturated mobile coverage
- Intelligent print solution offering follow-me-print and mobile printing
- Virtual computer labs to enable lab work in any teaching session
- Rich telephony solutions
- The ability to pre-book rooms and spaces online, book spaces on the spot, and see whether a space is occupied or booked.

Wayfinding

Wayfinding will deliver ‘real time’ digital information through wayfinding kiosks, including directional information, room and PC availability. Shuttle bus and train timetables, and weather updates will also be available.

Tea and Coffee Facilities

All floors will have dedicated tea and coffee making facilities, including hot water, microwave and sink.

Accessibility

The campus will be designed to comply with the Building Code of Australia and relevant Australian Design Standards. Specific areas have been identified as crucial to the needs of users with disabilities, including path of travel, entry/exit, toilets, desk heights, and communication systems.