

WESTERN SYDNEY
UNIVERSITY



UNDERGRADUATE
GUIDE 2027



UNLIMITED.



WE PUT YOU AT THE HEART

Our student-centred approach offers you the choice of online, on-campus and flexible study options combined with work-integrated learning. Through work experience placements, internships and volunteering opportunities, you'll get the real-life experience, practical skills and knowledge that you need for your future career.

WE'RE HERE TO HELP

At Western, we're here to help you discover your unique strengths. Our team of dedicated Western Success Advisers, along with a variety of student support services such as student welfare and careers support, clinics, counselling, disability services, academic and library support, will help you to grow in knowledge, skills and confidence.

WE WANT A SUSTAINABLE WORLD

When it comes to sustainability, we're committed! For an unprecedented four years in a row, Western has been named #1 in the world for our social, economic and environmental impact in the Times Higher Education University Impact Rankings (2022-2025). Why? Because we care about the future. We are the uni that does more about sustainability, climate action, equality, inclusivity and social justice impact.

WE'RE FUTURE-FOCUSED

From our online learning environments and use of digital technologies to enhance the study experience (like being the first NSW uni to be an Adobe Creative Campus) to our on-campus computer laboratories and state-of-the-art library, research and clinical facilities, we adopt new and emerging technologies to provide a richer educational experience.

WE PROVIDE OPPORTUNITY FOR SUCCESS

From The Academy to The College, and alternative entry programs and scholarships, multiple pathway options are available for entry and academic success.

Want more reasons? Visit
westernsydney.edu.au/whywestern





IN THE WORLD 2022-2025

TIMES HIGHER EDUCATION IMPACT RANKINGS

SO MANY REASONS TO STUDY WITH WESTERN



TOP 2%

OF UNIVERSITIES WORLDWIDE*

* Times Higher Education (THE)
World University Rankings 2019-2025



FIVE STARS FOR EMPLOYABILITY*

* QS Top Universities: QS Stars Ratings 2024



\$20M

IN SCHOLARSHIPS,
GRANTS AND PRIZES

ACKNOWLEDGEMENT OF COUNTRY

With respect for Aboriginal cultural protocol and out of recognition that its campuses occupy their traditional lands, Western Sydney University acknowledges the Darug, Dharawal, Gadigal, Gundungurra and Wiradjuri Peoples and thanks them for their support of its work on their lands (Greater Western Sydney and beyond).

HSC TRUE REWARD

WESTERN'S EARLY OFFER PROGRAM FOR YEAR 12 STUDENTS

Year 12 is stressful enough – with exams, ATAR scaling and wondering if you'll get an offer to your dream course. Imagine securing a spot before your HSC exams start.

Well, you can.

Our HSC True Reward Program provides an early offer to a course based on your Year 11 or Year 12 subject results relevant to the career you want, rather than a scaled ATAR.

To find out more about
HSC True Reward visit
westernsydney.edu.au/truereward



OPEN DAY



Sunday 5 July

Parramatta South campus

REGISTER NOW

westernsydney.edu.au/openday



Stay near to the people, places and possibilities that matter most while reaching your goals.

We're part of Western Sydney – and committed to your future.

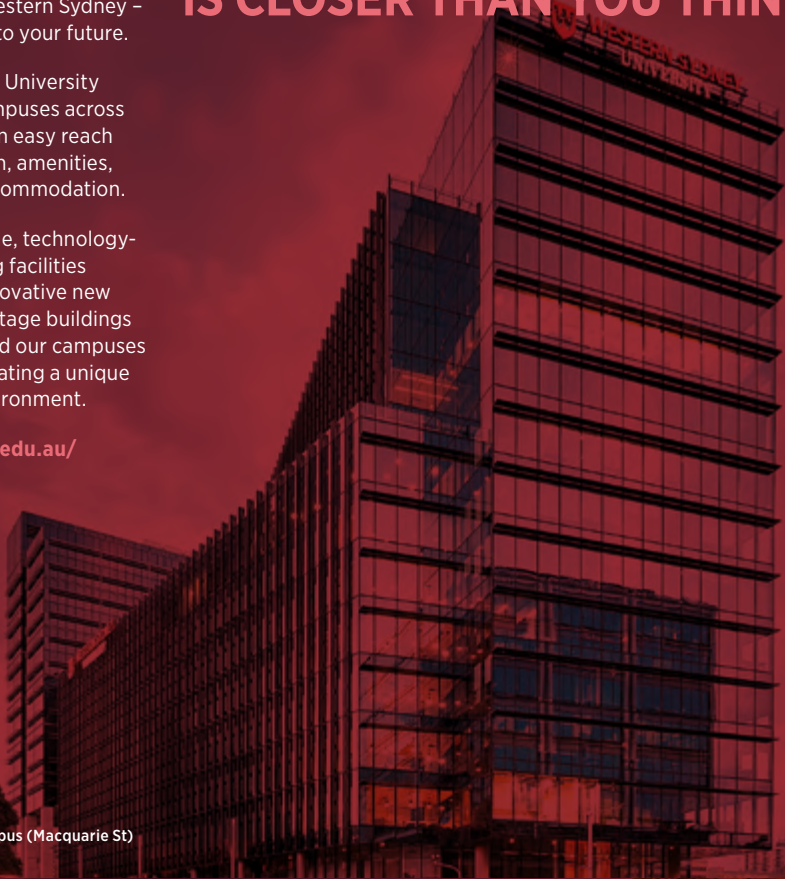
Western Sydney University has multiple campuses across Sydney, all within easy reach of transportation, amenities, services and accommodation.

Our leading-edge, technology-enabled learning facilities complement innovative new buildings or heritage buildings that have defined our campuses for decades, creating a unique educational environment.

westernsydney.edu.au/campuses



YOUR FUTURE IS CLOSER THAN YOU THINK



Parramatta City campus (Macquarie St)



Parramatta City campus (Hassall St)



Parramatta South campus (Female Orphan School)



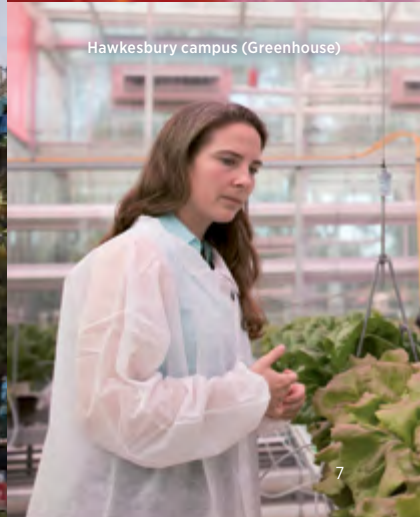
Campbelltown campus



Bankstown City campus



Liverpool City campus



Hawkesbury campus (Greenhouse)

STUDENT SUPPORT

At Western, we have a wealth of support services to help you navigate your university journey, such as:

- Programs to help you settle into uni life as well as your studies
- Our friendly student-facing teams who are ready to answer any questions you may have
- Student Welfare Service
- Counselling and mental health and wellbeing services
- Disability Service
- Members of the ADF
 - Student Veteran Program
- Elite athletes and performers support.

westernsydney.edu.au/support



STUDENT ACCOMMODATION

Find your place, create your space and feel at home.

With a range of accommodation options available, you're sure to find your home away from home.

You'll discover a vibrant community where you can forge lasting friendships, a supportive environment with 24/7 on-site support and a space that feels like home from day one.

Experience the best of university life with on-campus living.

For more information visit, westernsydney.edu.au/accommodation

Questions? [studentaccommodation](https://westernsydney.edu.au/studentaccommodation)
[@westernsydney.edu.au](https://westernsydney.edu.au)



APPLYING TO STUDY AT WESTERN

DOMESTIC APPLICANTS

Apply directly with Western (it's free)

You can apply to study at Western, for free, using our application portal.

Apply via UAC You can apply to Western via the Universities Admissions Centre (UAC). Note: Application fees apply. The following degrees can only be applied for via UAC:

- Bachelor of Clinical Science (Medicine)/ Doctor of Medicine (MD)
- Bachelor of Midwifery
- Bachelor of Occupational Therapy
- Bachelor of Performance (Acting)
- Bachelor of Physiotherapy
- Bachelor of Paramedicine
- Bachelor of Speech Pathology.

INTERNATIONAL APPLICANTS

You can apply via our portal or through an agent representative.

westernsydney.edu.au/apply



DIFFERENT WAYS TO GET INTO UNI

Sometimes, to reach your potential, all you really need is a break. And with various ways to get into Western, that's exactly what we want to give you!

Pathways include:

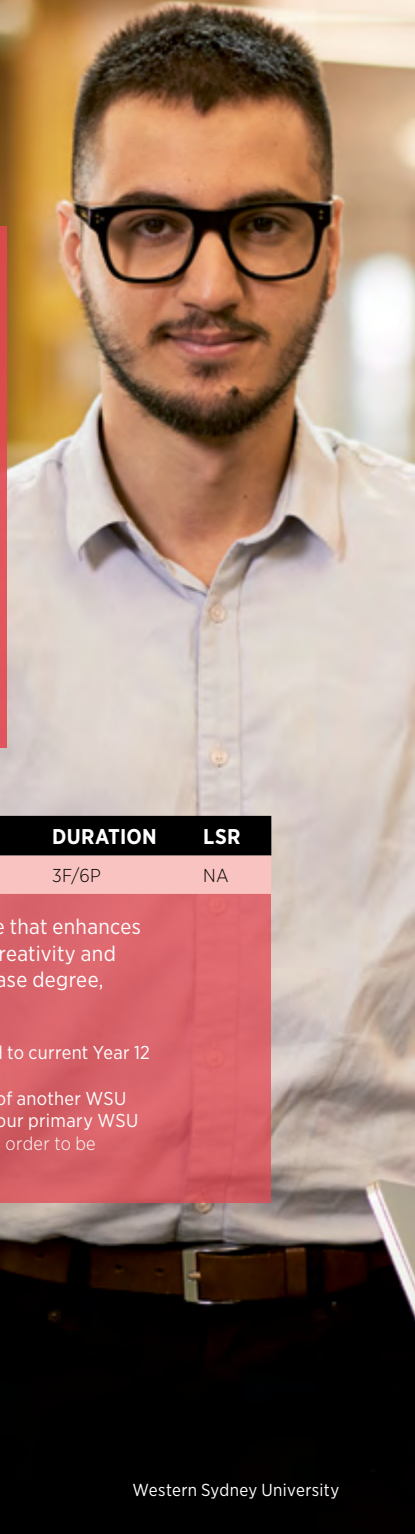
- Aboriginal and Torres Strait Islander Entry Program
- Schools Recommendation Scheme
- Student Veteran Program
- The College
- TAFE/Tertiary Education Pathways
- Rural Admission Scheme (Medicine)
- Portfolio and Audition Pathways.

westernsydney.edu.au/applicationpathways





The Academy



Future thinking. A community of changemakers

The Academy is a co-curricular program for students who want to learn, grow and transform as leaders and changemakers.

Focused on transformative and impactful leadership, our program is designed to build your awareness, knowledge and critical skills to lead with confidence and purpose.

Join our community of leaders by applying for membership to The Academy or enrolling in the Bachelor of Creative Leadership.

westernsydney.edu.au/theacademy

DEGREE	CAMPUS	DURATION	LSR
B Creative Leadership*	PS	3F/6P	NA

The Bachelor of Creative Leadership (BCL) is a concurrent degree that enhances your employability through skills in critical thinking, innovation, creativity and ethical leadership – the skills that will allow you to excel in your base degree, career trajectory and different aspects of life.

NA = Not applicable; not based on the ATAR; or the program is not offered to current Year 12 applicants; or no offers will be made to Year 12 applicants in these rounds.

Note: * The BCL is designed to be taken concurrently or upon completion of another WSU degree. 3 year duration includes 2 years of credit for prior learning from your primary WSU degree. Students must be eligible to graduate from their primary degree in order to be granted credit for prior learning in the Bachelor of Creative Leadership.



AREAS OF STUDY

CAMPUS KEY

PS	Parramatta South
PC	Parramatta City
PE	Penrith
HW	Hawkesbury
LC	Liverpool City
CA	Campbelltown
BC	Bankstown City
SC	Sydney City

DEGREE KEY

LSR	Lowest Selection Rank
B	Bachelor of
F	Full-time
P	Part-time <i>not applicable for international students</i>
EqP	Equivalent Part-time
D	Distance
M	Master of
NC	New course

ARTS AND COMMUNICATION



TOP 250

IN THE WORLD FOR COMMUNICATION
AND MEDIA STUDIES

QS World University Subject Rankings 2025



TOP 250

IN THE WORLD
FOR LINGUISTICS

QS World University Subject Rankings 2025

DEGREE	CAMPUS	DURATION	LSR
B Arts <i>Major in:</i> Anthropology, Arabic, Chinese, Creative Writing, Criminology and Social Justice, Cultural and Social Analysis, Drama, Economy and Markets, English, Geography and Urban Studies, Global Business, Heritage and Tourism, History and Political Thought, Indigenous Australian Studies, Indonesian, Innovation and Change, International English, International Relations and Asian Studies, Islamic Studies, Japanese, Linguistics, Musicology, Music Performance, Organisations and Work, Peace and Development Studies, Philosophy, Psychological Studies, Sociology	BC, PS, PE	3F/6P	60
B Arts (Interpreting and Translation)	PC	3F/6P	60
B Arts (Pathway to Teaching Early Childhood/Primary)/ M Teaching (Early Childhood and Primary)*	BC, PS, PE	4.5-5F/EqP	60
B Arts (Pathway to Teaching Early Childhood/Primary)/ M Teaching (Early Childhood and Primary) Diploma Pathway**^	BC, PS, PE	3.5-4F/EqP	NA
B Arts (Pathway to Teaching Primary)/M Teaching (Primary)*	BC, PS, PE	4-4.5F/EqP	60
B Arts (Pathway to Teaching Secondary)/M Teaching (Secondary)*	BC, PS, PE	4-4.5F/EqP	60

ARTS AND COMMUNICATION

DEGREE	CAMPUS	DURATION	LSR
B Communication Major in: Advertising, Journalism, Public Relations	PS	3F/6P	60
	SC	3F	60
	PE	3F/6P	60
B International Studies	BC, PS	3F/6P	60

COMBINED AND ONLINE DEGREES	CAMPUS	DURATION	LSR
B Arts/B Laws	CA, PS	5F/10P	90
B Arts (Psychology)/B Laws	CA, PS	5.5F/11P	90
B Arts/B Business	BC, PS	4F/8P	60
B Arts/B Social Science	BC, PS, PE	4F/8P	60
B Communication/B Business	PS	4F/8P	60
B Communication/B Laws	CA, PS	5F/10P	90
B Communication	Online	3F/6P/D	60
B International Studies/B Business	BC, PS	4F/8P	60
B International Studies/B Social Science	BC, PS	4F/8P	60
B International Studies/B Laws	CA, PS	5F/10P	90
B Science/B Arts	PS	4F/8P	65



ZIGGY

Bachelor of Arts

I chose Arts because of its flexibility, which allowed me to explore different subjects and hone in on what I truly wanted to do professionally. It gave me the freedom to be creative and find my true interests, unlike the more rigid structure of high school or the workforce. I love the ability to explore various areas of learning, from sociology to modern history, and meet people who help shape where I want to go in life.

ARCHITECTURE, BUILT ENVIRONMENT AND DESIGN



MAKERSPACE

Our Makerspaces include 3D printing, 3D scanning, laser cutting, woodworking and metal fabrication equipment.

westernsydney.edu.au/makerspace



TOP 200

IN THE WORLD FOR
ARCHITECTURE
AND BUILT ENVIRONMENT

QS Subject Rankings 2025

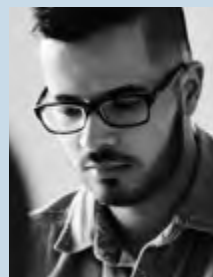
DEGREE	CAMPUS	DURATION	LSR
B Architectural Design	PC	3F/6P	65
B Construction Management (Honours)	PS, PE	4F/8P	60
B Construction Technology	PE	3F	60
B Design and Technology	PC	3F/6P	60
Major in: Visualisation and Graphics, Design Management, Design Lead Innovation			
B Industrial Design (Honours)	PC	4F/8P	60
Major in: Design Practice, Technology Entrepreneurship			

COMBINED DEGREES	CAMPUS	DURATION	LSR
B Construction Management Studies/B Laws	CA, PS	5F/10P	90

CONCURRENT DEGREES

These degrees are not stand-alone but have been designed to be undertaken with any undergraduate degree at Western. The duration for these concurrent degrees may vary depending on the duration of your primary Western degree.

DEGREE*	CAMPUS	LSR
B Applied Data Science	PS	NA
B Creative Leadership	PS	NA



NA = Not applicable; not based on the ATAR; or the program is not offered to current Year 12 applicants; or no offers will be made to Year 12 applicants in these rounds. Note: * These degrees are designed to be taken concurrently or upon completion of another Western degree. Students must be eligible to graduate from their primary degree in order to be granted credit for prior learning in these degrees.

BUSINESS AND ACCOUNTING



FINANCIAL TRAINING LAB

The Financial Training Lab emulates a real trading floor to help students develop real-world skills in financial investment and funds management. The simulated environment features 40 terminals where students can make informed and responsible investment decisions and manage portfolios.

DEGREE	CAMPUS	DURATION	LSR
B Business Major in: Accounting, Finance and Fintech, Business Analytics, Economics, Human Resource Management, International Business, Management, Marketing and Martech, Property, Sport Management	BC, CA, PC SC^	3F/6P 3F	60 60
B Accounting Major in: Financial Planning, Taxation, Financial Planning and Taxation	BC, CA, PC SC^	3F/6P 3F	70 70
B Business (Pathway to Teaching Secondary)/ M Teaching (Secondary)** Major in: Business Studies, Secondary Teaching	BC, CA, PC	4.5-5F/EqP	60
B Business (Property)*	Distance	3F/6P/D	60

COMBINED DEGREES	CAMPUS	DURATION	LSR
B Accounting/B Laws	CA, PS	5F/10P	90
B Arts/B Business	BC, PS	4F/8P	60
B Business/B Laws	CA, PS	5F/10P	90
B Engineering (Honours)/B Business	BC, CA, PC, PE	5F/10P	68
B International Studies/B Business	BC, PS	4F/8P	60
B Science/B Business	CA, HW, PS	4F	65

^ Sydney City campus offers the following Business majors: Accounting, Applied Finance, International Business, Management and Marketing. Degree may be fast-tracked in 2 years. * Property major offered externally. ** To obtain teaching accreditation, a Master of Teaching must be completed following the Bachelor degree.

COMPUTING, DATA AND MATHEMATICS



AASHISH

Bachelor of Computer Science

The best thing about my course is it provides us technical skills as well as it prepares us for soft skills like teamwork, communication and leadership.

DEGREE	CAMPUS	DURATION	LSR
B Computer Science Major in: Artificial Intelligence, Cyber Security, Networked Systems, Systems Programming, Technology Entrepreneurship	PS, PE	3F	80
B Data Science	PS	3F/6P	75
B Information and Communications Technology Major in: Cyber Security and Ethical Hacking, Enterprise Systems and Architectures, Health Informatics, Multimedia Computing, Networking and Cloud Computing, Software Development	CA, PS, PE, SC*	3F	60
B Information Systems Major in: User Experience Design, Networking, Cyber Security Management, Infonomics, Health Informatics, Business Analytics	PS, SC*	3F	60
B Mathematics	CA, PS, PE	3F/6P	80
COMBINED DEGREES	CAMPUS	DURATION	LSR
B Information and Communications Technology/B Laws	CA, PS	5F	90
B Information Systems/B Laws	CA, PS	5F/10P	90

* Sydney City campus majors may vary.

CRIMINOLOGY, POLICING AND CYBER SECURITY



DHIMAHI

Bachelor of Cyber Security and Behaviour

I love IT, especially the investigating and forensics part. I chose cyber security because of privacy, wanting to make sure that everyone is secure in the online world.

DEGREE	CAMPUS	DURATION	LSR
Associate Degree in Applied Policing*	Online, Goulburn, Placement	2FT	50
B Criminology	LC, PE	3F/6P	65
B Criminal and Community Justice	LC, PE	3F/6P	65
B Cyber Security and Behaviour	PS	3F/6P	75
B Policing	LC, PE	3F/6P	62

COMBINED DEGREES	CAMPUS	DURATION	LSR
B Criminology/B Laws	CA, PS	5F/10P	90
B Criminal and Community Justice/B Laws	CA, PS	5F/10P	90
B Criminal and Community Justice/B Social Work	LC	5F/10P	80

* Additional application criteria assessed by NSW Police Force are required for mandatory Professional Suitability Assessment (PSA). This includes medical, fitness, background and psychological assessments. PSA eligibility must be maintained for the duration of the program.



WESTERN CENTRE FOR CYBER SECURITY AID AND COMMUNITY ENGAGEMENT (CACE)

Western CACE is a secure facility where students are trained to assist small businesses with cyber incident response. Students can train for one year alongside their studies, making them eligible to undertake important cyber security certifications.

DESIGN, MUSIC AND SCREEN MEDIA



BIANCA

Bachelor of Communication and
Bachelor of Creative Industries

What I like most about my course is the professional tools, such as the Adobe Creative Suite, that Western provides you...sets me up to have a great portfolio.



TOP 250
IN THE WORLD FOR
COMMUNICATION AND
MEDIA STUDIES

QS World University Subject Rankings 2025

DEGREE	CAMPUS	DURATION	LSR
B Design	PS	3F/6P	NC
B Music†	PE	3F/6P	NA
B Performing Arts (Acting)†	PE	3F	NA
B Screen Media (Arts and Production)	PS	3F/6P	70

NA = Not applicable; not based on the ATAR.

NC = New course.

† B Music and B Performing Arts (Acting) have additional selection criteria.



MEDIA STUDIO AND POST-PRODUCTION FACILITIES

Explore your potential in our \$2 million, purpose-built media studio, industry-standard photomedia studio and post-production facilities.

ENGINEERING



SURESH

Master of Engineering
Civil Engineering

The course offers a variety of experience in Civil Engineering, and I really value the research opportunities, which will be helpful if I decide to pursue a PhD.



TOP 150
IN THE WORLD FOR
CIVIL ENGINEERING

Academic Ranking of World Universities 2025

DEGREE	CAMPUS	DURATION	LSR
B Engineering (Honours)	PC, PE, SC	4F/8P	68
B Engineering (Honours) (Advanced Manufacturing)	PC, PE	4F/8P	68
B Engineering (Honours) (Civil Engineering)	PC, PE	4F/8P	68
	SC	4F	68
B Engineering (Honours) (Construction Engineering)	PC, PE	4F/8P	68
B Engineering (Honours) (Electrical Engineering)	PC, PE	4F/8P	68
	SC	4F	68
B Engineering (Honours) (Materials Engineering)	PC, PE	4F/8P	68
B Engineering (Honours) (Mechanical Engineering)	PC, PE	4F/8P	68
	SC	4F	68
B Engineering (Honours) (Robotics and Mechatronics Engineering)	PC, PE	4F/8P	68
B Engineering (Honours) (Sustainable Engineering)	PC, PE	4F/8P	68
B Engineering Science	PC, PE	3F/6P	60
Major in: Advanced Manufacturing, Civil, Construction, Electrical, Materials, Mechanical, Robotics and Mechatronics, Sustainability			
B Engineering Science	SC	3F	60
Major in: Civil, Electrical, Mechanical			

COMBINED DEGREES	CAMPUS	DURATION	LSR
B Engineering (Honours)/B Business	BC, CA, PC, PE	5.5F/11P	68

Note: Successful applicants receiving credit for prior learning may be required to travel to different Western Sydney University campuses to complete the elements of their Engineering program.



SOLAR CAR PROJECT

Western's Solar Car project is a student-led team pushing the boundaries of innovation and precision engineering within a socially responsible and sustainable environment.

westernsydney.edu.au/solarcar

HEALTH AND SPORT SCIENCES



ANNIKA

Bachelor of Sports Health and Exercise Science

I love my course because it has all the facilities that I need. It helps me to understand further for my course next year.

DEGREE	CAMPUS	DURATION	LSR
B Clinical Exercise Physiology	CA	4F/8P	NC
B Exercise Science	CA	3F/6P	NC
B Health Science Major in: Health Promotion, Health Services Management, Recreational Therapy, Public Health, Clinical Sciences*	CA	3F/6P	60
B Health Science Major in: Health Promotion, Health Services Management, Recreational Therapy, Public Health*	SC	3F	60
B Health, Physical Education and Sport	PE	3F/6P	NC
B Occupational Therapy [†]	CA	4F	90
B Paramedicine [†]	CA	3F	90
B Physiotherapy [†]	CA	4F	90
B Podiatric Medicine	CA	4F	70
B Speech Pathology [†]	CA	4F	90
B Sport and Performance Science	CA	4F/8P	NC
B Traditional Chinese Medicine	CA	4F	65

COMBINED AND ONLINE DEGREES	CAMPUS	DURATION	LSR
B Health Science (Health Promotion, Recreational Therapy, Public Health)	Online	3F/D	60

[†] = Not available for True Reward.

NC = New course.

Note: [†] Double majors are available in the B Health Science degree (e.g. B Health Science (Health Promotion/Public Health)). Check the University Handbook for combinations. [#] Degree may be fast-tracked in 2 years. Fast tracking of the degree is only available at Sydney City campus.

LAW



REBECCA

Juris Doctor

I love the real-world hands-on experience we get, especially with the moot courtroom. It's exciting to actually stand up and practise as if we're in a courtroom.



TOP 300

IN THE WORLD
FOR LAW

THE World Subject Rankings 2025

DEGREE	CAMPUS	DURATION	LSR
B Laws (Non-Graduate Entry)	CA, PS	4F/8P	90

COMBINED DEGREES	CAMPUS	DURATION	LSR
B Accounting/B Laws	CA, PS	5F/10P	90
B Arts (Psychology)/B Laws	CA, PS	5.5F/11P	90
B Arts/B Laws	CA, PS	5F/10P	90
B Business/B Laws	CA, PS	5F/10P	90
B Communication/B Laws	CA, PS	5F/10P	90
B Construction Management Studies/B Laws	CA, PS	5F/10P	90
B Criminal and Community Justice/B Laws	CA, PS	5F/10P	90
B Criminology/B Laws	CA, PS	5F/10P	90
B Information and Communications Technology/B Laws	CA, PS	5F	90
B Information Systems/B Laws	CA, PS	5F/10P	90
B International Studies/B Laws	CA, PS	5F/10P	90
B Science/B Laws	CA, PS	5F/10P	90
B Social Science/B Laws	CA, PS	5F/10P	90

MEDICINE

Western offers a fully accredited five-year undergraduate medical program based in Western Sydney with placements throughout NSW.

Selection is based on performance in the UCAT ANZ, an interview and academic capability.

For more details, visit westernsydney.edu.au/mdapplicants

For information on program structure and subjects, visit westernsydney.edu.au/future/study/courses/undergraduate/doctor-of-medicine

DEGREE	CAMPUS	DURATION	LSR
Bachelor of Clinical Science (Medicine)/Doctor of Medicine (MD) [†]	CA	5F	See below

ADMISSION CRITERIA			
Greater Western Sydney Applicants	CA	5F	93.5
Rural/Remote Applicants	CA	5F	91.5
Other Applicants	CA	5F	95.5

UCAT ANZ - Undergraduate Clinical Admissions Test
Unless you are of Aboriginal or Torres Strait Islander descent, all domestic applicants must sit the UCAT ANZ.

[†] = Not available for True Reward



TOP 300

IN THE WORLD FOR CLINICAL MEDICINE
Academic Ranking of World Universities
(ARWU) 2025

NURSING AND MIDWIFERY



GEORGIA

Bachelor of Nursing

I really like how this course teaches me not only how health systems work but also how to identify and address gaps in those systems, preparing me to make meaningful change in the future.



QS World University Subject Rankings 2025

DEGREE	CAMPUS	DURATION	LSR
B Nursing	PS, LC, CA, HW	3F	60
B Nursing (Enrolled Nurse Pathway) [†]	CA, HW, PS, LC	2F	NA
B Midwifery [†]	PS	3F	80
M Nursing Practice (Preregistration) [†]	HW, PS	2F	NA

NA = Not applicable; not based on the ATAR; or the program is not offered to current Year 12 applicants; or no offers will be made to Year 12 applicants in these rounds. [†] = Not available for True Reward.

Notes: Duration takes into account credit for prior learning.

An online Bachelor of Nursing is available via WSUOnline.



CLINICAL PRACTICE UNITS

Western's modern Simulated Learning Centres are equipped with high-quality technology to support students learning across a diverse range of simulation scenarios.

PSYCHOLOGY



ELINA

Bachelor of Psychology (Honours)
Continuous support and guidance, with a program that not only gives you the tools to help others, but aids you in understanding yourself.



TOP 150
IN THE WORLD
FOR PSYCHOLOGY

Academic Ranking of World Universities 2025

DEGREE	CAMPUS	DURATION	LSR
B Psychology (Honours)*	BC, PS, PE	4F/8P	70
B Psychological and Social Sciences	BC, PS, PE	3F/6P	60

COMBINED DEGREES	CAMPUS	DURATION	LSR
B Arts (Psychology)/B Laws	CA, PS	5.5F/11P	90

* B Psychological Science 3rd year exit point from the B Psychology (Honours) for students not eligible for Honours.



PSYCHOLOGY CLINIC

We are committed to providing high-quality care to our community through the Western Sydney University Psychology Clinic and the Child Development Clinic. The collective qualifications and experience of the clinical team means that provisionally registered psychologists are provided with exceptional levels of support, supervision and training by our team of fully accredited and experienced clinical psychology supervisors.

westernsydney.edu.au/clinic

SCIENCE



DOMENIC

Graduate

Bachelor of Science (Forensic Science)

Field experience at Western really sets students up for the workforce. I graduated with case files of work we'd done with simulated crime scenes, which could only be done at Western.



SEVENTH

IN AUSTRALIA FOR ECOLOGY

Academic Ranking of World Universities 2025

DEGREE	CAMPUS	DURATION	LSR
B Advanced Medical Science Major in: Anatomy and Physiology, Biomedical Science, Human Nutrition	CA, PS	3F/6P	90
B Medical Science Major in: Anatomy and Physiology, Biomedical Science, Human Nutrition	CA, PS	3F/6P	65
B Medical Science (Human Nutrition)(Food Science and Innovation)	CA, PS	3F/6P	65
B Advanced Science Major in: Agricultural Science, Animal Science, Applied Physics, Biology, Chemistry, Environmental Health, Forensic Science, Food Science and Innovation, Sustainable Environmental Futures, Zoology	CA, HW, PS	3F/6P	90
B Science Major in: Agricultural Science, Animal Science, Applied Physics, Biology, Chemistry, Environmental Health, Forensic Science, Food Science and Innovation, Sustainable Environmental Futures, Zoology	CA, HW, PS	3F/6P	65
B Science (Agricultural Science)	HW	3F/6P	65
B Science (Animal Science)(Zoology)	HW	3F/6P	65
B Science (Environmental Health)	HW	3F/6P	65
B Science (Forensic Science)	HW	3F/6P	65
B Science (Food Science and Innovation)	HW	3F/6P	65
B Science (Sustainable Environmental Futures)	HW	3F/6P	65
B Science (Pathway to Teaching Primary/Secondary)*	CA, HW, PS	4.5-5F/EqP	65

COMBINED DEGREES	CAMPUS	DURATION	LSR
B Science/B Arts	PS	4F/8P	65
B Science/B Business	CA, HW, PS	4F	65
B Science/B Laws	CA, PS	5F/10P	90

* To obtain teaching accreditation, a Master of Teaching must be completed following the Bachelor degree. Check the University Handbook for durations.

SOCIAL WORK AND SOCIAL SCIENCES



RILEY

Bachelor of Social Work
Indigenous Entry Program

I started helping other students at my high school and then I found I worked with them really well and it was something I wanted to do.



TOP 300
IN THE WORLD FOR
SOCIAL SCIENCES

THE World Subject Rankings 2025

DEGREE	CAMPUS	DURATION	LSR
B Social Science Major in: Anthropology, Child and Community, Criminology and Criminal Justice, Disability Studies, Geography and Urban Studies, Heritage and Tourism, Peace and Development Studies, Sociology	LC, PS, PE SC*	3F/6P 3F	60 60
B Youth Work	LC, PS, PE	3F/6P	80
B Social Work	LC, PS	4F/8P	80
B Humanitarian and Development Studies	PS, PE	3F/6P	62
B Psychological and Social Sciences	BC, PS, PE	3F/6P	60

COMBINED DEGREES	CAMPUS	DURATION	LSR
B Arts/B Social Science	BC, PS, PE	4F/8P	60
B Criminal and Community Justice/B Social Work	LC	5F/10P	80
B International Studies/B Social Science	BC, PS	4F/8P	60
B Social Science/B Laws	CA, PS	5F/10P	90

Note: For more Social Science degrees look under Policing, Psychology and Tourism, Events and Urban Planning areas of study. Check the University Handbook for further information. *Sydney City students can only currently undertake the Criminology and Criminal Justice major.

TEACHING AND EDUCATION



KORTANA

Master of Teaching (Primary)

Becoming a teacher was a lifelong dream, and Western offered the right pathway to make that a reality after my undergraduate studies.



TOP 200

IN THE WORLD
FOR EDUCATION

THE World Subject Rankings 2025

DEGREE	CAMPUS	DURATION	LSR
B Education (Early Childhood) [†]	CA	4F/8P	68
B Education (Primary) [†]	BC	4F/8P	68
B Education (Secondary) [†]	BC, PS, PE	4f/8P	68

DEGREE FOR ABORIGINAL AND TORRES STRAIT ISLANDER PEOPLES	CAMPUS	DURATION	LSR
B Education (Primary) – Aboriginal and Torres Strait Islander Education [†]	BC	4F	68

DEGREES – PATHWAY TO TEACHING*	CAMPUS	DURATION	LSR
B Arts (Pathway to Teaching Early Childhood/Primary)/ M Teaching (Early Childhood and Primary)	BC, PS, PE	4.5–5F/EqP	60
B Arts (Pathway to Teaching Primary)/ M Teaching (Primary)	BC, PS, PE	4–4.5F/EqP	60
B Arts (Pathway to Teaching Secondary)/ M Teaching (Secondary)	BC, PS, PE	4–4.5F/EqP	60
B Business (Pathway to Teaching Secondary)/ M Teaching (Secondary)	BC, PS, PE	4.5–5F/EqP	60
B Science (Pathway to Teaching Primary/Secondary)/ M Teaching (Primary) or M Teaching (Secondary)	CA, HW, PS	4.5–5F/EqP	65

[†] = Not available for True Reward. Note: * To obtain teaching accreditation, a Master of Teaching must be completed following the Pathway to Teaching Bachelor degree. Check the University Handbook for further information.

TOURISM, EVENTS AND URBAN PLANNING



NABIN

Bachelor of Tourism and Event Management

My academic voyage at Western has been an amazing experience, profoundly influencing my career and undoubtedly one of the best decisions I've made.



TOP 200
IN THE WORLD
FOR GEOGRAPHY

Academic Ranking of World Universities 2025

DEGREE	CAMPUS	DURATION	LSR
B Tourism and Event Management Major in: Festival and Event Management, Heritage and Tourism, Place Management and Planning, Sport Events and Tourism, Sustainability, Tourism and Environment	PS	3F/6P	62
B Social Science Major in: Geography and Urban Studies, Heritage and Tourism	PS, PE	3F/6P	60
B Planning (Pathway to M Urban Management and Planning)	PS, PE	3F/6P	65



\$20M
IN SCHOLARSHIPS,
GRANTS AND PRIZES

Each year, Western offers \$20 million in scholarships for a range of University, government and donor-funded opportunities.

There are over 100 scholarships across a variety of categories, including Indigenous scholarships, high potential scholarships, equity scholarships and humanitarian scholarships.

For more information visit westernsydney.edu.au/browsescholarships

Pictured: Bronte Balenzuela, Katie Page Scholarship for High Achieving Women – Bachelor of Architecture



YOUR PATHWAY TO A BACHELOR DEGREE.



A WORLD OF OPPORTUNITIES

Our diploma courses provide a direct pathway into the second year of a Bachelor degree at Western.

Western's modular learning will help you reach your potential, no matter your starting point or ATAR. Here's some great reasons why studying a diploma at Western can set you on a path to success:



No exams or lectures: learn by immersing yourself in workshop-style classes.



One course-specific subject at a time: learn course-specific subjects in 4-week modules. Giving you more time to focus, without slowing you down.



Vibrant and diverse community: as part of Western's community you will have access to the University's facilities, libraries, and labs. You can choose from a range of student clubs and societies, make friends and build connections.



Flexible pathways: graduate with a diploma or transition into the second year of a Bachelor degree at Western - gaining two qualifications in the time of one.



Student Success Coach: dedicated one-to-one guidance and support to help navigate your career and study choices.



Life-friendly timetable: designed for busy lives.

For further information, including campus offerings, please visit westernsydney.edu.au/modular

HECS-HELP loans are available for eligible domestic students studying diploma courses.



LEARN MORE

ARTS

DIPLOMA	INTAKE	LOCATION	DURATION	LSR
Diploma in Arts	Mar/Jul	Bankstown City	12 months	O/A

Successfully complete this diploma and progress into the second year of:

Bachelor of Arts (see page 11)

Bachelor of Arts (Pathway to Teaching Primary) (see page 11)

Bachelor of Arts (Pathway to Teaching Secondary) (see page 11)

Bachelor of Arts (Pathway to Teaching Early Childhood/Primary) (see page 11)

Bachelor of Arts (Interpreting and Translation) (see page 11)

BUSINESS

DIPLOMA	INTAKE	LOCATION	DURATION	LSR
Diploma in Business	Mar/Jul	Bankstown City Parramatta City Online	12 months	O/A

Successfully complete this diploma and progress into the second year of:

Bachelor of Business (see page 14)

Bachelor of Tourism and Event Management (see page 27)

CONSTRUCTION AND ENGINEERING

DIPLOMA	INTAKE	LOCATION	DURATION	LSR
Diploma in Building Design and Construction	Mar/Jul	Penrith	12 months	O/A

Successfully complete this diploma and progress into the second year of:

Bachelor of Construction Management (Honours) (see page 13)

Bachelor of Construction Technology (see page 13)

DIPLOMA	INTAKE	LOCATION	DURATION	LSR
Diploma in Engineering Studies	Mar/Jul	Penrith	12 months	O/A

Successfully complete this diploma and progress into the second year of:

Bachelor of Engineering (Honours) (see page 18)

COMMUNICATION ARTS

DIPLOMA	INTAKE	LOCATION	DURATION	LSR
Diploma in Creative Industries and Communication	Mar/Jul	Penrith	12 months	O/A

Successfully complete this diploma and progress into the second year of:

Bachelor of Communication (see page 12)

EDUCATION

DIPLOMA	INTAKE	LOCATION	DURATION	LSR
Diploma in Education Studies	Mar/Jul	Bankstown City Parramatta City	12 months	O/A

Successfully complete this diploma and progress into the second year of:

Bachelor of Education (Primary) (see page 26)

Bachelor of Education (Primary) – Aboriginal and Torres Strait Islander Education (see page 26)

Bachelor of Education (Secondary) (see page 26)

O/A = Open Access.

HEALTH SCIENCE

DIPLOMA	INTAKE	LOCATION	DURATION	LSR
Diploma in Health Science	Mar/Jul	Campbelltown	12 months	O/A

Successfully complete this diploma and progress into the second year of:

Bachelor of Health, Physical Education and Sport (see page 19)

Bachelor of Health Science (see page 19)

UNDERGRADUATE PREPARATION PROGRAM	INTAKE	LOCATION	DURATION	LSR
Undergraduate Preparation Program – Nursing/Health Science (2 Semesters) ^{†^}	Mar/Jul	Campbelltown Liverpool City	12 months	O/A

Successfully complete this program and get guaranteed entry into:

Diploma in Health Science (see page 30)

Successfully complete this program, meet the required Grade Point Average (GPA), and progress into the first year of:

Bachelor of Nursing* (see page 22)

Bachelor of Midwifery* (see page 22)

Bachelor of Health Science (see page 19)

* Bachelor of Nursing and Bachelor of Midwifery: Please note that additional English language proficiency requirement set by the Australian Nursing and Midwifery Accreditation Council (ANMAC) must be declared and met before students are eligible to commence study in the Bachelor of Nursing or Bachelor of Midwifery at Western Sydney University.

INFORMATION AND COMMUNICATIONS TECHNOLOGY

DIPLOMA	INTAKE	LOCATION	DURATION	LSR
Diploma in Information and Communications Technology	Mar/Jul	Penrith	12 months	O/A

Successfully complete this diploma and progress into the second year of:

Bachelor of Information Systems (see page 15)

Bachelor of Information and Communications Technology (see page 15)

SCIENCE

DIPLOMA	INTAKE	LOCATION	DURATION	LSR
Diploma in Science	Mar/Jul	Campbelltown	12 months	O/A

Successfully complete this diploma and progress into the second year of:

Bachelor of Medical Science (see page 24)

Bachelor of Science (see page 24)

SOCIAL SCIENCE

DIPLOMA	INTAKE	LOCATION	DURATION	LSR
Diploma in Social Sciences	Mar/Jul	Bankstown City Penrith	12 months	O/A

Successfully complete this diploma and progress into the second year of:

Bachelor of Criminal and Community Justice (see page 17)

Bachelor of Humanitarian and Development Studies (see page 25)

Bachelor of Policing (see page 17)

Bachelor of Social Science (see page 25)

Bachelor of Tourism and Event Management (see page 27)

Duration is indicative of diploma study only. **Key:** LSR = Lowest Selection Rank. O/A = Open Access. † = Not available for True Reward. ^ = The Undergraduate Preparation Program prepares you to start and succeed in the first year of a diploma or Bachelor course.

WE ARE MORE THAN A UNIVERSITY. WE ARE A COMMUNITY.

Message from the Vice-Chancellor.

Western Sydney University is boldly different, reflecting the values of our great region through our diversity, youthfulness, aspiration and energy.

With us, you belong. You are part of something bigger than yourself.

We are more than a university.
We are a community.

Our mission is to ensure student success, impactful research, and stronger communities.

No matter who you are, where you are from or where you study, you will have access to a world-class higher education that changes lives and creates opportunities.

Our students gain more than knowledge, skills and understanding; they stand out. They graduate as digital leaders, adaptable and armed with critical thinking and the industry experience needed to excel in the careers of the future.

As the number one university in the world four times in a row in the Times Higher Education Impact Rankings, we are committed to delivering positive change for students and communities.

Making a difference starts at Western.

We welcome you to be part of the journey as we take Western Sydney to the world and the world to Western Sydney.

Distinguished Professor George Williams AO
Vice-Chancellor and President

CONNECT WITH US ON SOCIAL



@westernsydneyu



@western-sydney-university

CONTACT US

Call 1300 668 370

Future students westernsydney.edu.au/future

Email study@westernsydney.edu.au



DIGITAL GUIDE

An online version of this guide is available.
View or share here.



ABOUT THE IMAGES IN THIS PUBLICATION

Western's marketing materials only include photos of our own students and staff to help convey authenticity and our strong culture of inclusivity. We thank our brand ambassadors for volunteering to be a part of our marketing collateral and for displaying a sense of pride in our University community.

RANKINGS

All rankings quoted in this guide are benchmarked against over 1000 universities worldwide.

DISCLAIMER

Western Sydney University reserves the right at all times to withdraw or vary programs listed within this publication. Variations may include, but are not limited to, location of its programs on our campuses or other locations. In the event that a program within this publication is to be changed or withdrawn, applicants will be advised via email to the email address specified by them on their application. With respect to a program location change, students should be aware of the need to accommodate such changes for the whole or part of programs for which they enrol. The University also reserves the right to update, amend or replace online versions of this publication without notice.

Western Sydney University is a multi-campus university. Students may be required to travel to different campuses for some parts of their program.

Published February 2026. CRICOS Provider Number 00917K.



westernsydney.edu.au